

# Small Business Solutions Guide

# Introduction

How the world connects, communicates, and conducts business has fundamentally changed. AT&T understands that small businesses around the world face their own set of challenges. We are here to help you **take care of business**. Use this guide to explore and find the technology solutions you need today.

# Solutions fit for your business needs



AT&T  
Network



Fiber

Mobility

**AT&T 5G**



SD-WAN



Voice & Collaboration



Business Tools



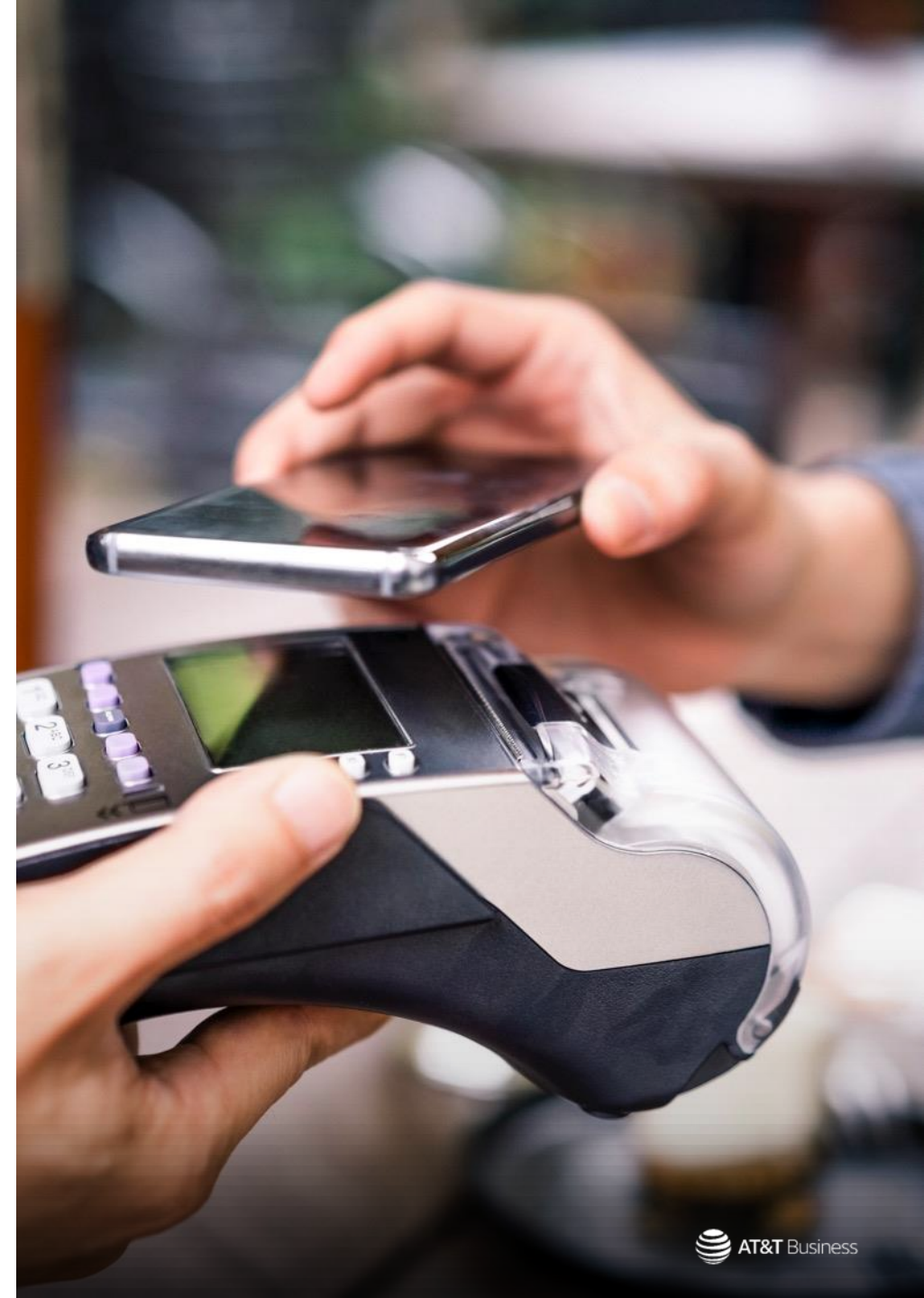
Cybersecurity

# AT&T Business Fiber

AT&T Business Fiber broadband service provides ultrafast internet access. With speeds of up to 1Gbps, you can quickly transfer large files, stream video, and handle transactions more reliably.

- Equal upload and download speeds (optional)
- Have a dependable backup internet connection for when your primary connection is in high-demand
- Ideal for locations that have video applications, conferencing services and Wi-Fi connectivity
- Support cloud applications, conferencing and video monitoring

[Learn more](#)





# Mobility rate plans and devices

## Mobility Rate Plans

We offer a wide variety of mobility rate plans and devices to help you meet your business needs.

- Mobilize your business with a broad portfolio of smartphones and mobile phones backed by fast, dependable, and reliable network coverage
- The AT&T portfolio of smartphones and mobile phones is amongst the best in the wireless industry. Plus, choose from a selection of accessories to help power, protect, and personalize your device
- With unlimited, pooled and shared data options, you're sure to find the plan that is right for your business

[Learn more](#)



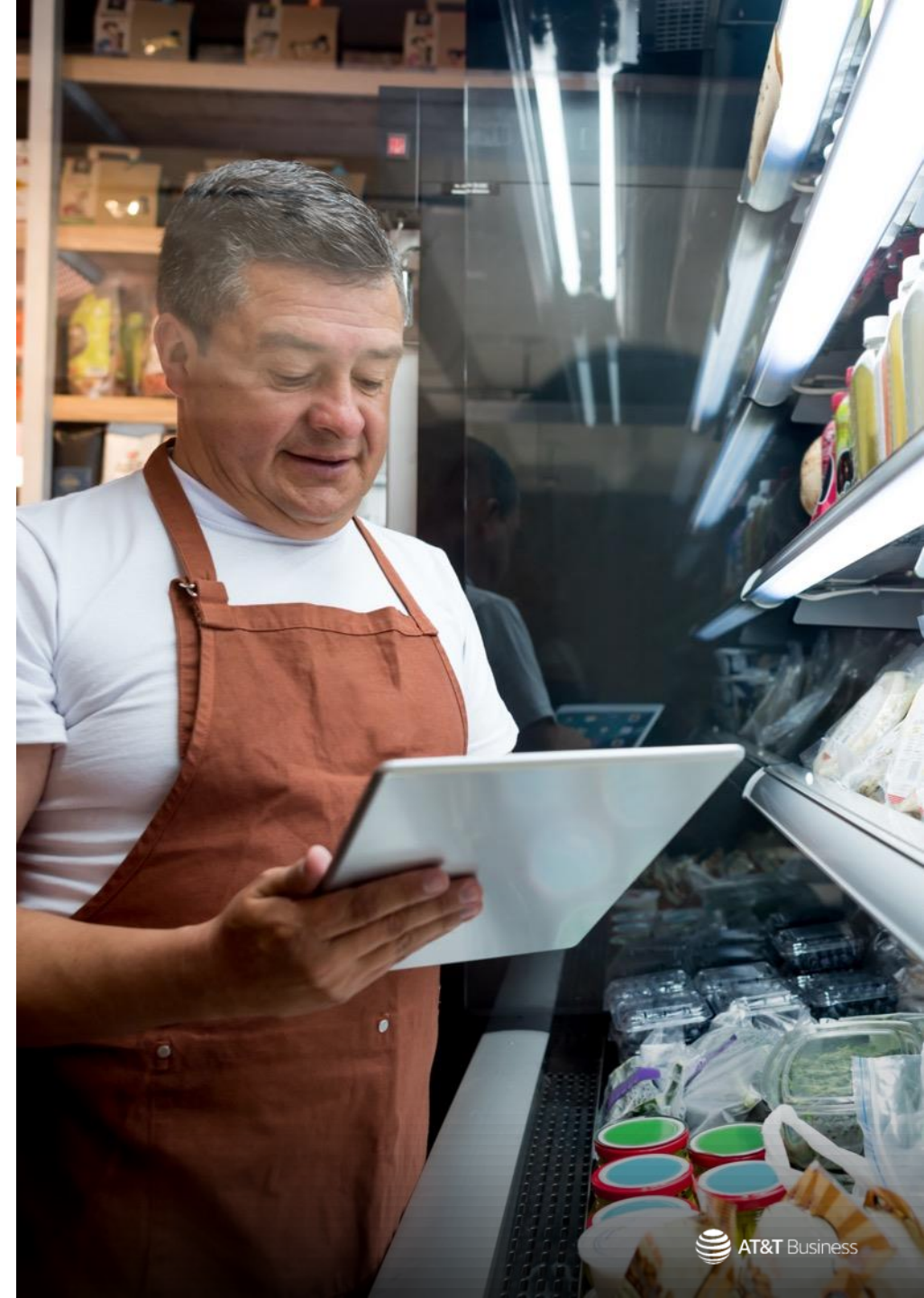
# Internet and networking

# AT&T Dedicated Internet

AT&T Dedicated Internet is a dedicated connection for your business – proactively managed by a team focused on providing a consistent experience – helping you to stay connected to your customers, business partners, and employees.

- Dedicated internet connection, not shared
- Identical upload and download speeds
- Industry leading performance and reliability SLAs
- Proactive network monitoring and maintenance
- Broad availability throughout the US and 60 countries worldwide

[Learn more](#)





# AT&T VPN

AT&T VPN is a highly secure network service that provides reliable connectivity for all your critical business locations and applications. You can prioritize multiple applications (voice, video, data, cloud, etc.) over the same network while optimizing performance for each.

- Scalability to support networks of ANY size
- Supports wide range of speeds from 2MB to 100GB. Provides the ability to make changes in near real-time via AT&T Business Center
- Network and site performance metrics right at your fingertips with online reporting tools
- The VPN does not touch the public Internet and is protected by layered network-based security

[Learn more](#)





# AT&T Wireless Broadband

AT&T Wireless Broadband solution provides a cost-effective network alternative for business-critical applications.

- Give your business applications the fast and highly reliable connection you need to keep your business moving
- Have a dependable backup connection for times when your wired connection is in high-demand or there's a failure
- Our no overage plans give you a predictable monthly charge which means you can spend more time focused on your business instead of your bill
- All data is not equal for your business, so you get priority for your business applications with 10GBs, 30GBs, or 50GBs of AT&T Business Fast Track

[Learn more](#)



# AT&T Fixed Wireless Internet

AT&T Fixed Wireless Internet delivers high-speed internet service to eligible rural small businesses via an outdoor antenna and indoor Wi-Fi router.

- High-speed Internet with typical download speeds of 25Mbps
- Includes a large data bucket of 250GB per month
- Wi-Fi connections for multiple devices, such as laptops, tablets, and smartphones
- Connect to 4 devices simultaneously and enjoy a better online experience while browsing the internet, streaming, and downloading

[Learn more](#)



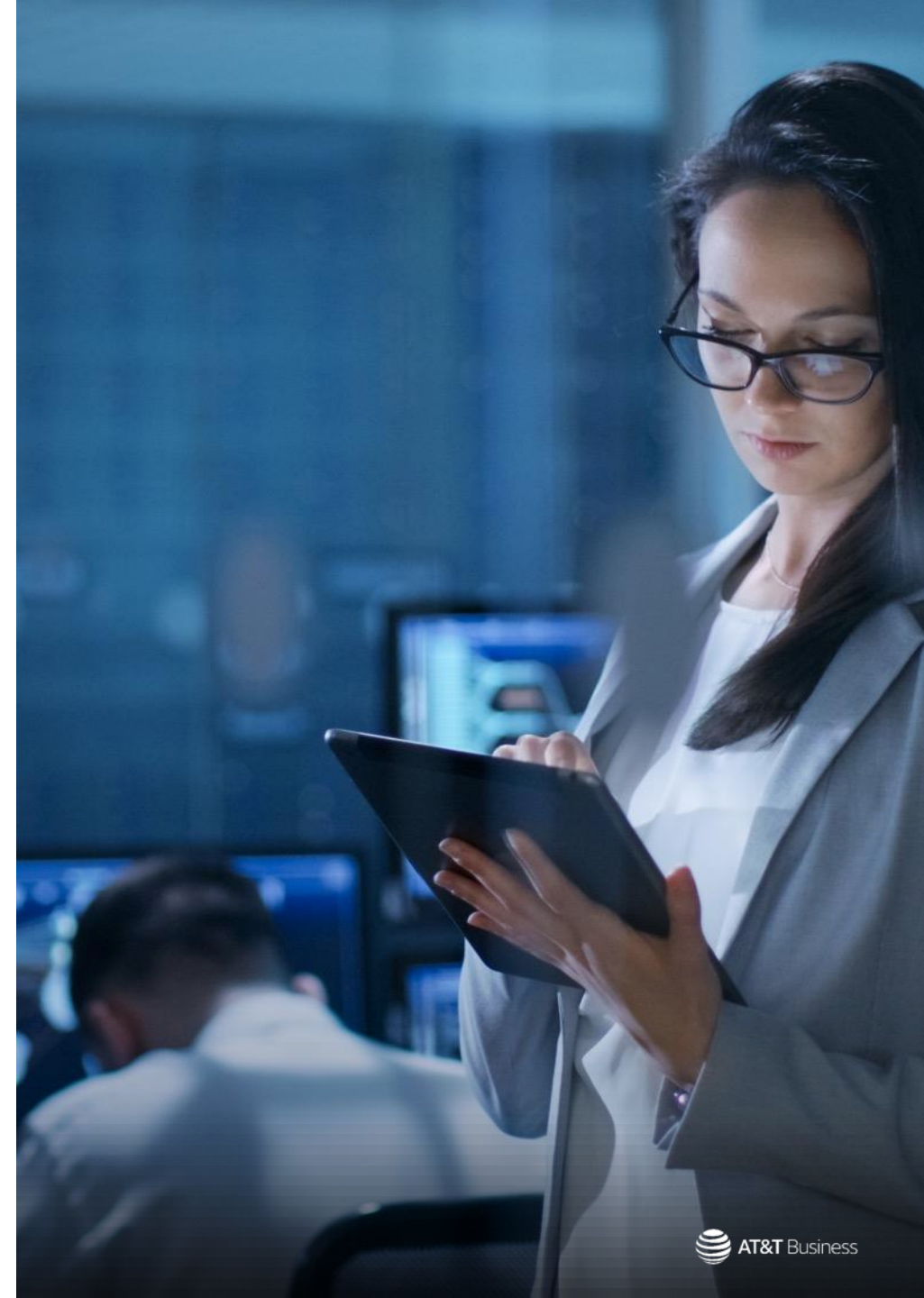


# AT&T SD-WAN

With AT&T SD-WAN, we've built a strong, future-ready, software-based platform that's transforming the WAN (Wide Area Network) landscape through Edge-to-Edge Intelligence – from connected endpoints, through the network, and to the cloud.

- Gain greater flexibility by selecting network technologies on a site-by-site basis
- Utilize any data service, from broadband to dedicated internet, to help create a future-ready, scalable network
- Convert network traffic and sensitive data to help minimize risk
- Optimizes your performance over Internet links with direct, highly secure access to cloud applications
- Gain control over costs and capital expenses, while integrating cost-effective, scalable connectivity options such as broadband and Internet connection into your network

[Learn more](#)





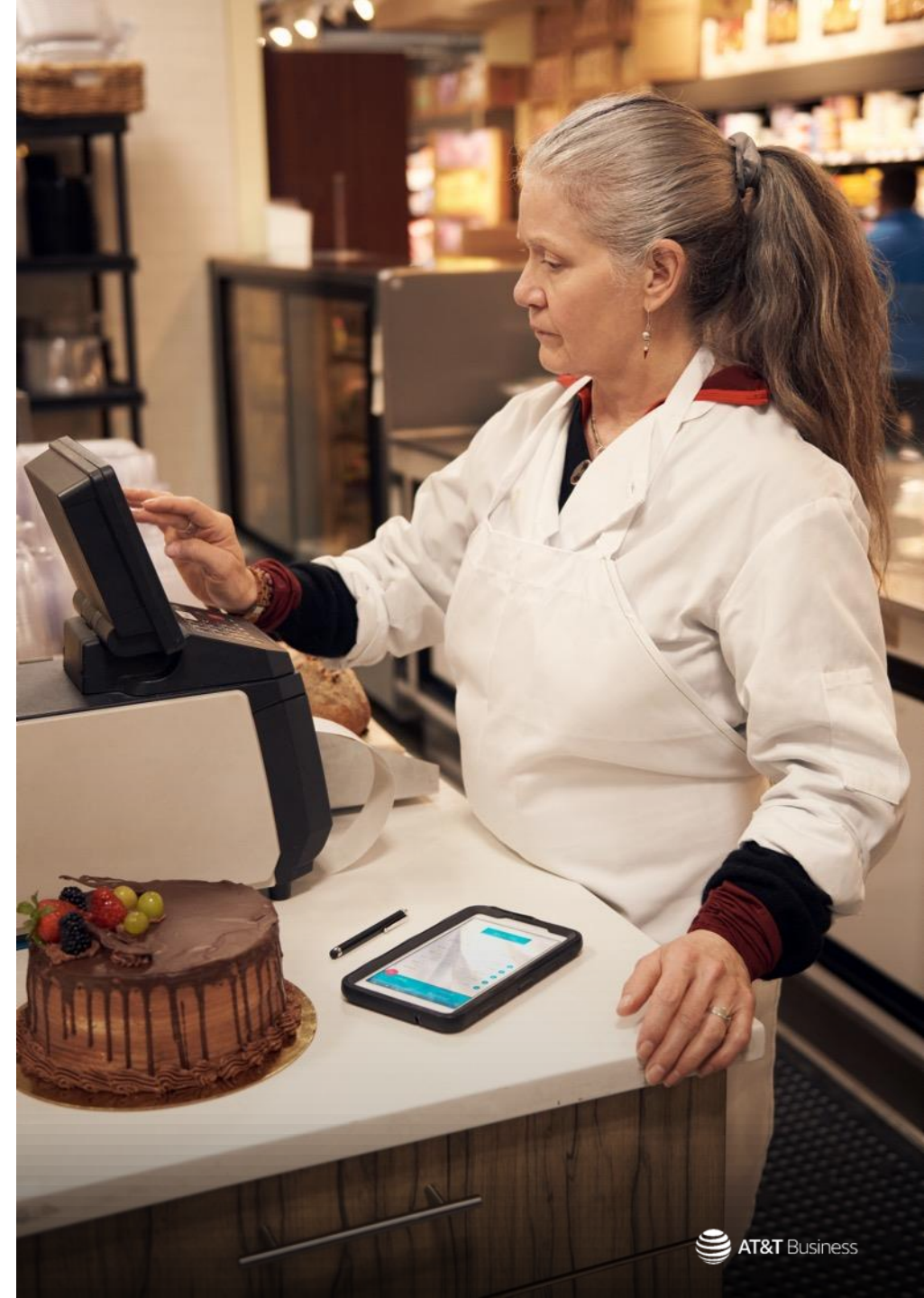
# Voice & Collaboration

# AT&T Office@Hand

AT&T Office@Hand is a cloud-based solution, providing feature-rich voice and collaboration tools so workers can be more productive in the office or on the go.

- Easy-to-use phone, fax, messaging, and conferencing system that lets you spend more time serving customers, not managing communications
- Set up quickly with a hosted solution that works over an existing internet connection and allows teams to meet and collaborate regardless of location or device
- Avoid maintenance, support, and capital expenses using a cloud-based solution with no expensive hardware to purchase, set up, manage, and maintain

[Learn more](#)



# AT&T IP Flexible Reach

## Description:

AT&T IP Flexible Reach is a managed Voice over IP (VoIP) communication solution that supports your inbound and outbound calling with less impact on your network's capacity.

- **Optimize network capacity:** Combine voice and data over integrated access
- **Utilize your current equipment:** Avoid investing in new equipment for voice lines
- **Help control costs:** Only pay for the number of lines you need
- **Avoid toll charges:** On-net (VoIP-to-VoIP) calls route within the network and avoid additional charges

[Learn more](#)





# Webex meetings with AT&T

**Webex Calling with AT&T:** Integrates multiple communication tools – voice, single number reach, IM/chat, email, and voicemail with presence.

**Webex Meetings with AT&T:** Offers a feature-rich, video-first, inclusive meeting environment so you can meet and share content as if you were in the same room.

- Ease of use with flexibility to add functionality when and where you need it
- Provides a consistent user experience
- Helps protect investment in on-premises infrastructure
- Scale with agility and flexibility to meet your business needs

[Learn more](#)



# AT&T Workforce Manager

AT&T Workforce Manager is a cost-effective, cloud-based platform for managing employees, vehicles, and assets.

- Support workforce productivity
- Streamline and automate processes and tasks
- Centralize company information
- Manage people and assets from a single pane of glass
- Enhance on-the-fly communication
- Save time, money, and resource

[Learn more](#)





# AT&T Enhanced Push-to-Talk

AT&T Enhanced Push-to-Talk (EPTT) connects your teams with voice, messaging, and location tracking with just the push of a button from anywhere.

- Near-real-time team collaboration
- Speed, high reliability, and compatibility
- Intuitive, internet based Corporate Administration Tool
- Connect your devices almost instantly on the nation's fastest wireless network

[Learn more](#)





# AT&T Fleet Complete

AT&T Fleet Complete helps you move faster and go further with better visibility and control of your fleets.

- Improve business operations and optimize assets with near real-time visibility of your large fleets, people, and assets
- Easy plug-and-play technology for your mixed fleets help drivers get up and running quickly
- Use advanced reporting to understand your fleet's total cost of ownership, plan for the long term, uncover new revenue streams, and help you grow your business

[Learn more](#)



# Business tools

# AT&T Website Solutions

With AT&T Website Solutions<sup>SM</sup>, we can help you get the most from an online presence. Build your own professional-looking website with our easy to use tools or work with our website design professionals who will build a website for you.

- Easy to setup, whether it's do-it-yourself or let us design the website for you
- The mobile-friendly website builder makes creating responsive, mobile-friendly websites easier than you've ever thought
- US-based technical support available 24/7
- Get detailed reports about your website traffic through our web analytics

[Learn more](#)





# Online marketing and email plans

Create effective email campaigns and benefit from powerful tracking tools with our easy-to-use platform. Select an affordable, scalable business-class email solution with features to match your needs.

- A simple to use solution with easy drag-and-drop templates
- Plan your email marketing schedule. Pick a time and date to send your emails when you want
- Detailed, real-time analytics including open and click-through rates

[Learn more](#)

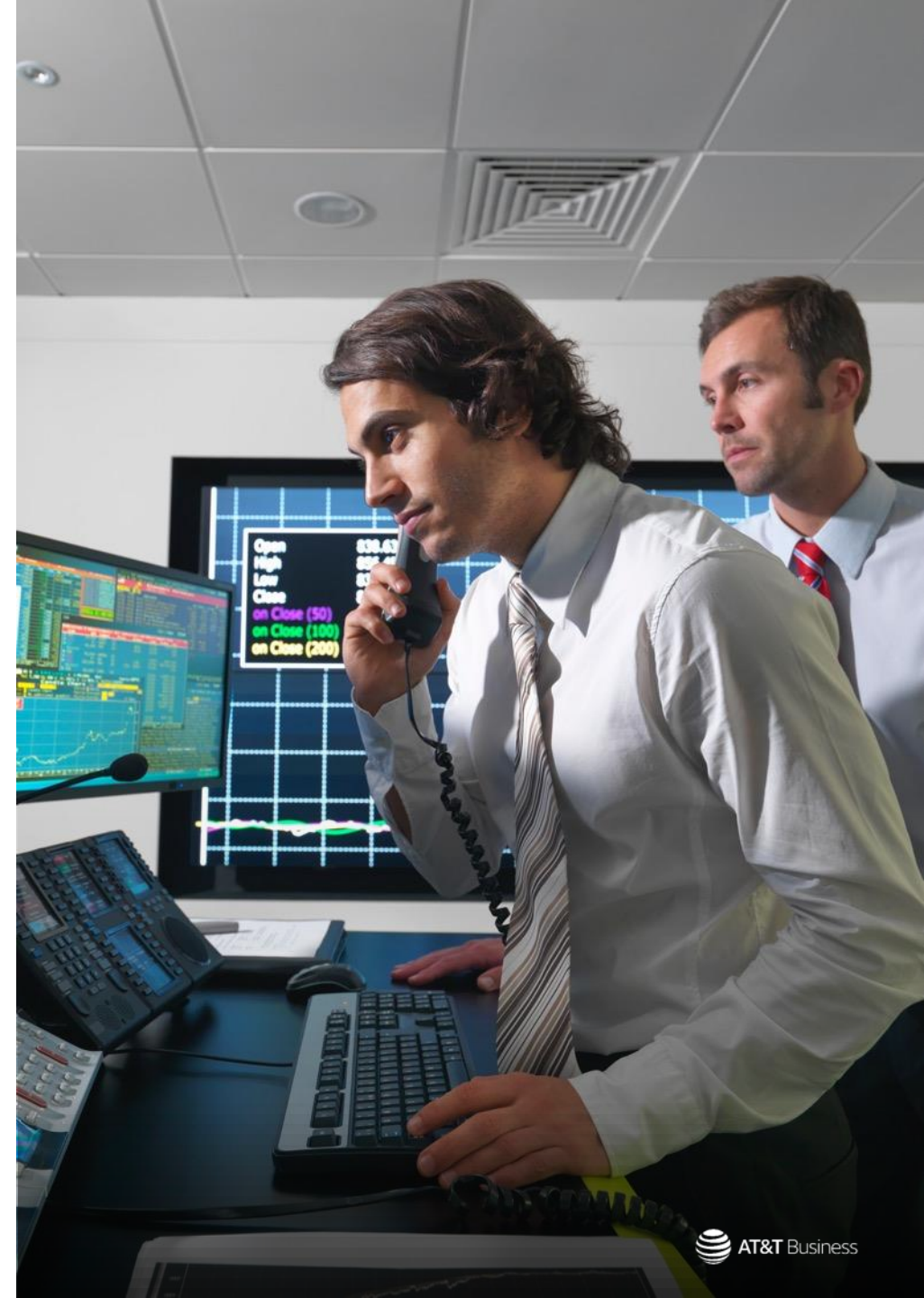


# AT&T Tech 360

U.S.-based, 24/7, remote tech services for desktops, laptops, tablets, mobile, IoT and connected devices. We can be your primary “virtual” IT department or can help your existing IT resource with day-to-day IT challenges. Plus, get automatic data backup with unlimited cloud storage for computers with AT&T Tech360<sup>SM</sup> **Backup and Go.**

- Help keep your business devices connected and running optimally, with help available 24/7 – even on holidays and weekends
- Utilize remote IT professionals for support with installation, configuration, and training on new software and hardware, and so much more
- With Backup and Go, you’ll get unlimited storage for your backed up computer files
- Let us help get your mobile and IoT devices working their best! Schedule an appointment at the time of your preference

[Learn more](#)



# Cybersecurity

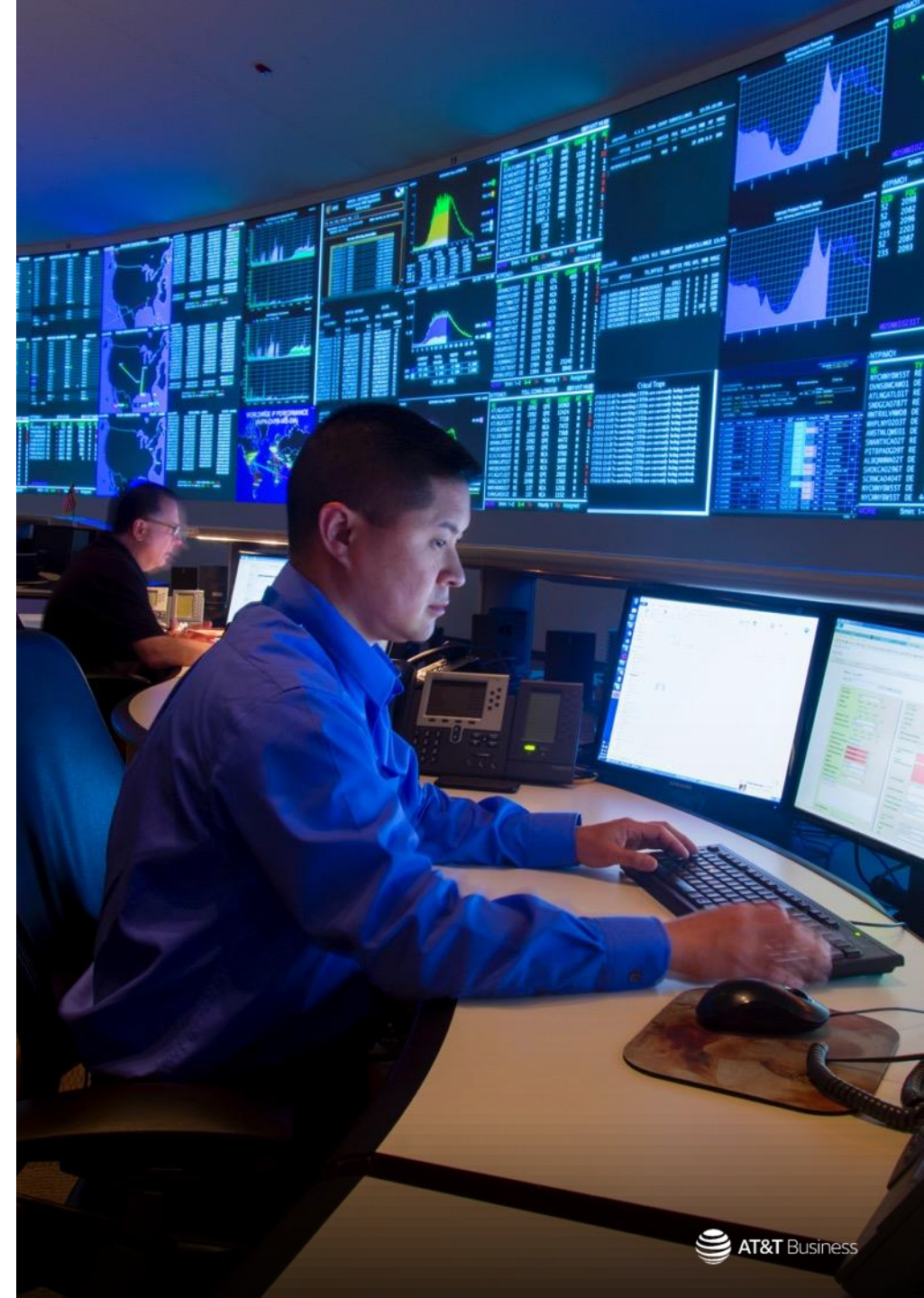


# AT&T Reactive DDoS Defense

Reactive DDoS (Distributed Denial of Service) defense from AT&T is a cybersecurity service that helps you proactively reduce cyber attacks before they can affect your business.

- Gives you a 24/7 threat-response plan to help defend your company from DDoS attacks
- Provides visibility into attack and mitigation details
- Detailed traffic analysis on malicious intruders that helps to identify from what is normal, so that malicious traffic can be sent to scrubbing facilities and be blocked
- Simple activation and operation of your business applications to help maintain the flow of legitimate business traffic

[Learn more](#)



# Unified Security Management (USM Anywhere)

AT&T USM Anywhere provides you with crucial security capabilities, giving you what you need to help protect your business – all in a single pane of glass.

- Drop a USM Anywhere sensor or agent where you want to monitor. USM Anywhere will begin to collect, normalize, and analyze the log data from your environment
- Respond to incidents fast and easily with organized and automated actions towards third-party tools
- Receive threat intelligence updates from the AT&T Alien Labs Team. This team researches and analyzes the different types of attacks, emerging threats, vulnerabilities, and exploits – so you don't have to

[Learn more](#)



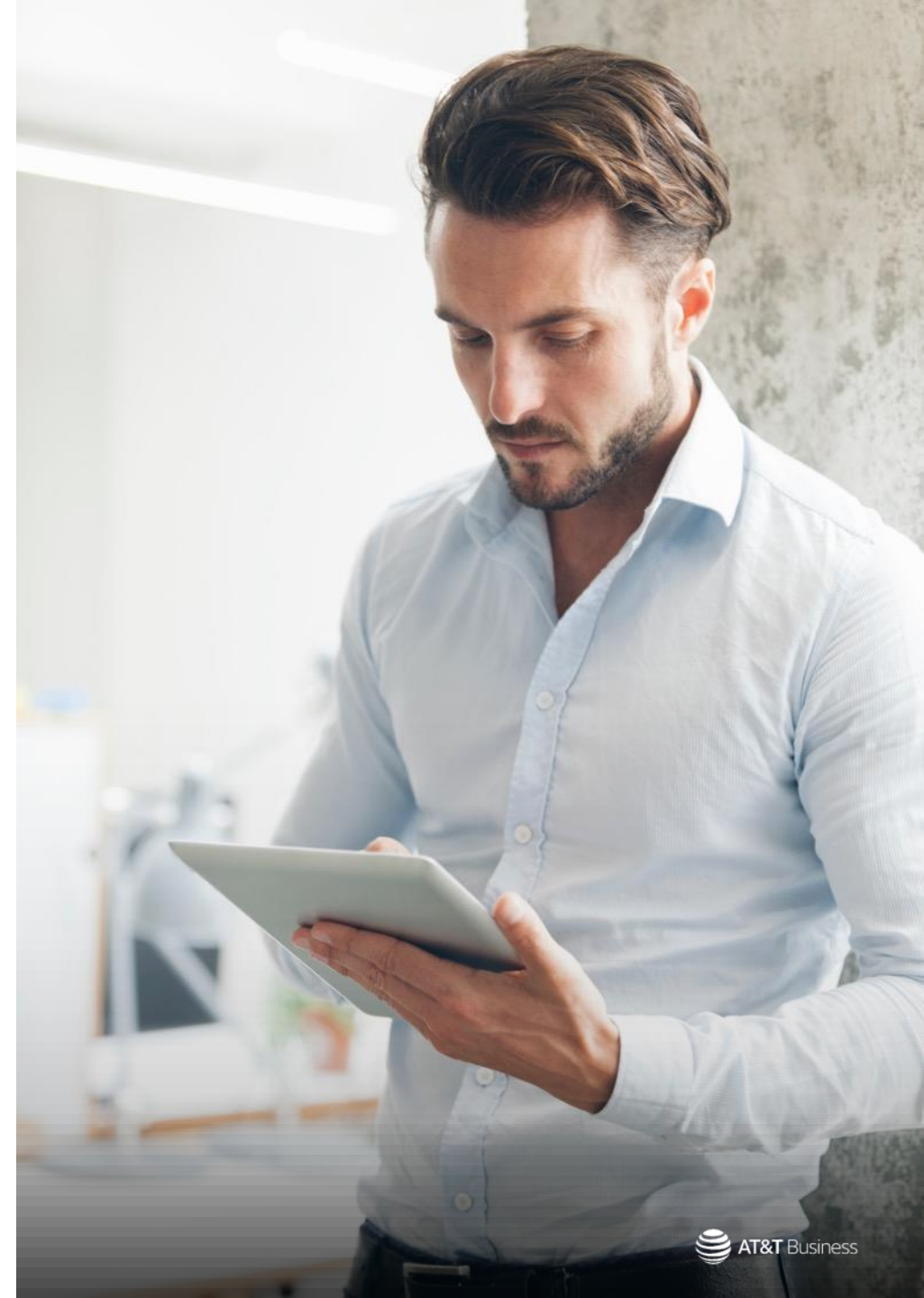


# AT&T Vulnerability Scanning

AT&T Vulnerability Scanning can quickly scan your systems and applications to identify cybersecurity vulnerabilities across your network connections.

- Validate that patch management tools are working properly
- Work toward achieving and maintaining compliance
- Maximize IT resources from vulnerability remediation by identifying and resolving threats
- Maintain security posture and business performance.
- Help reduce risk in a data breach and its impact on customers, employees and corporate reputation
- Demonstrate due diligence expected by customers today

[Learn more](#)



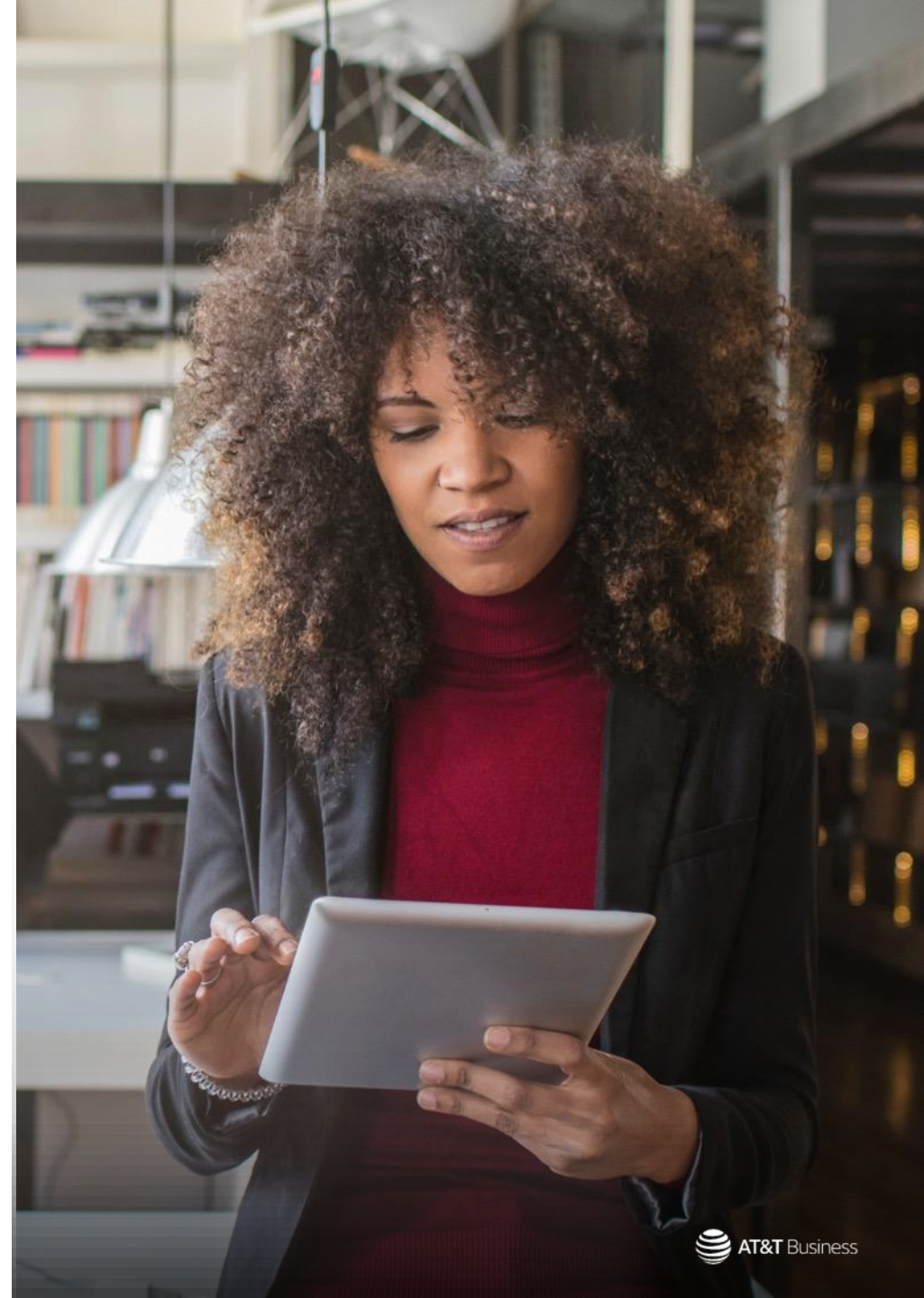


# McAfee Endpoint Security

McAfee Endpoint Security from AT&T is a cost-effective managed security solution that helps protect your business from viruses, hacking, and malware attacks.

- Detect malicious attacks via email, USB drives, external hard drives, and internet browsing
- Manage your business security the way you want by deploying in the cloud or on premises using your own server
- Guard against malware and cyberthreats with near-real-time protection
- Get up and running quickly and efficiently with simple installation

[Learn more](#)

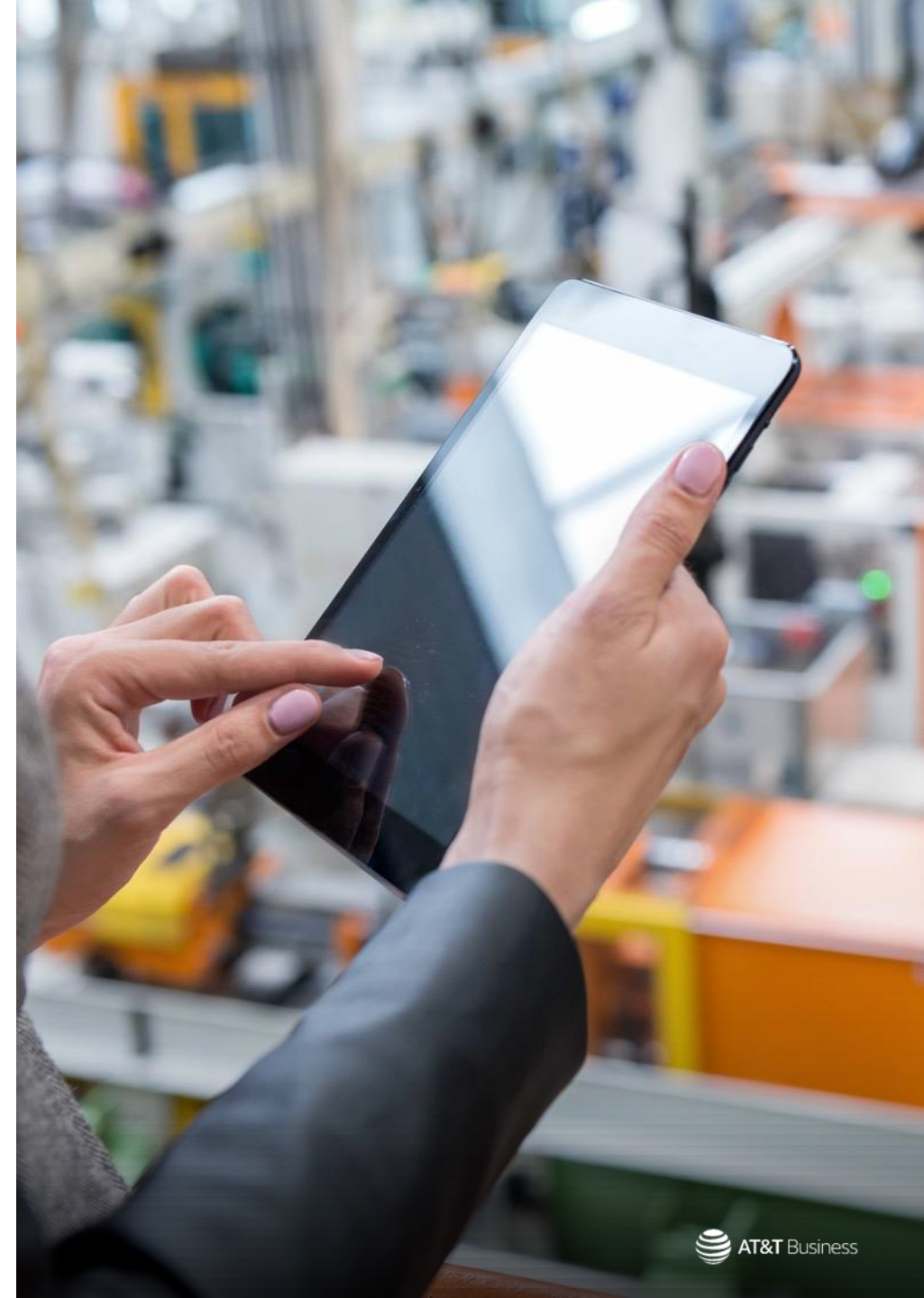


# IBM MaaS360 with AT&T

Mobility-as-a-Service 360 (MaaS360) with AT&T provides mobile security for the way people work and collaborate across your entire mobile device fleet.

- Sign up for our security device management program at anytime, online
- That will manage, secure, lock and wipe your devices from an easy-to-use dashboard
- [Enroll and setup](#) with 6 easy steps and have access to your mobile devices or laptops 24x7
- No technical expertise required. Our entry level mobile device management solution gives you device security without the cost or headcount of an IT resource
- Have insight into your device inventory and models as well as device status (security profile status)

Learn more





# AT&T AccessMyLAN

AccessMyLan from AT&T is a powerful management and protection tool for your data and devices.

- Content filtering and data usage monitoring
- Support mobile data policy compliance for internal corporate policies
- Integrates out of the box with nearly any UEM (Unified Endpoint Management) solutions
- Reduce the distraction of social media and streaming services
- Network based security policy enforcement for all SIM-based devices
- Network based visibility in to all your mobile data traffic

[Learn more](#)





# AT&T Global Security Gateway

AT&T Global Security Gateway is a cloud security solution that can detect and block malicious Internet activity and help you enforce business policies governing user access to the Internet and business applications.

- Helps protect users against web-based threats, including zero-day, and restrict what content can be accessed
- Enable rapid adoption of SD-WAN and cloud-based applications as well as the ability to provide security for mobile users
- Provide centralized visibility and reporting across all locations
- Help reduce upfront capital costs in favor of a more predictable operational expense model
- Empower organizations to quickly scale security to support new locations or acquisitions

[Learn more](#)

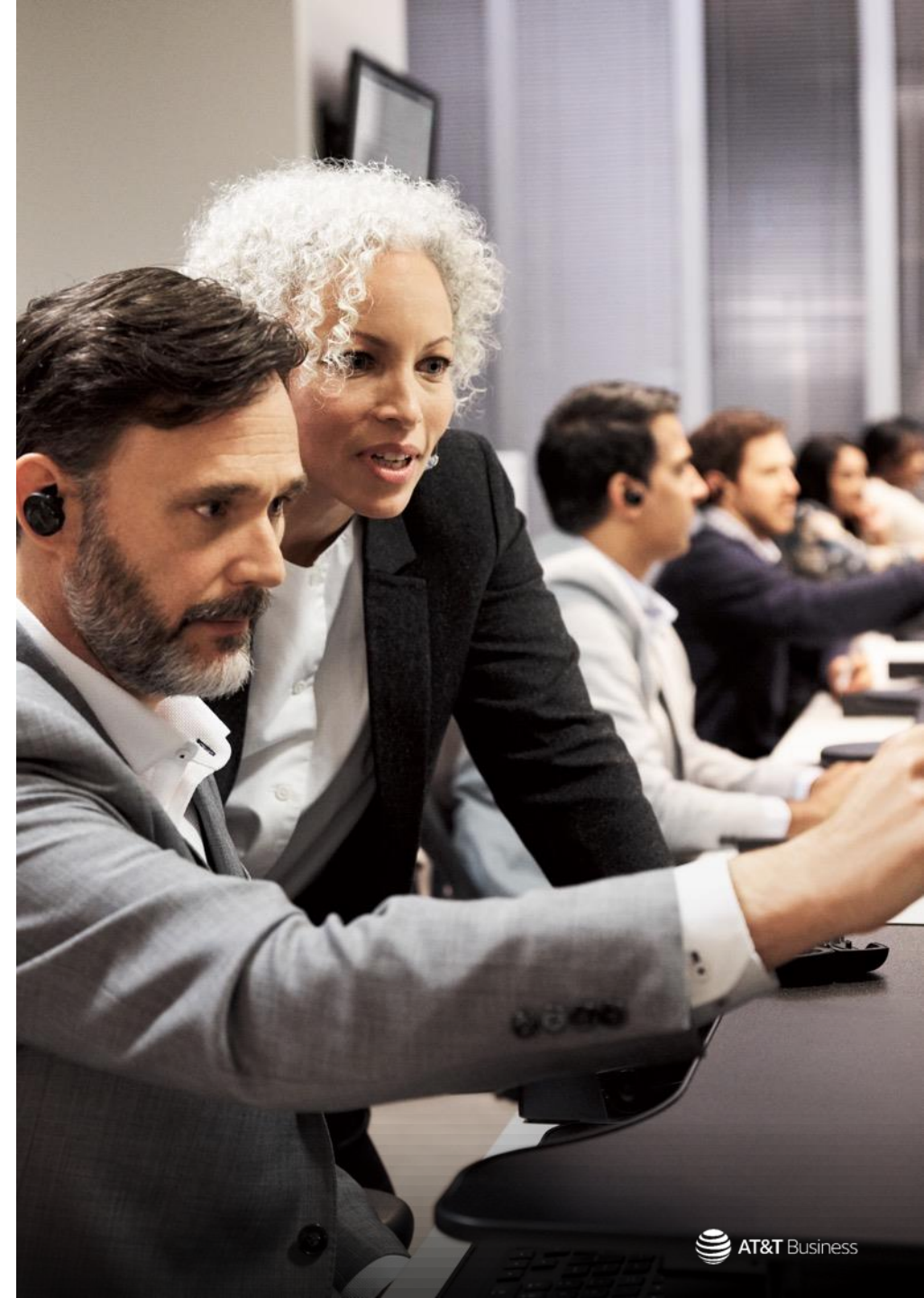


# Enterprise Threat Protector

Enterprise Traffic Protector (ETP), from AT&T helps to proactively identify and block security threats such as ransomware, malware, and phishing.

- Low number of false positives makes it easy to manage
- Enforce uniform compliance and internet use policies – block access to inappropriate domains and content
- Security for off-network devices as well as guest devices and traffic
- Enhance direct Internet access performance and reduce latency by only proxying risky traffic
- Easy to configure – takes less than two hours to deploy, provision, and scale

[Learn more](#)





# Why AT&T? We are here to support you!

With so many choices and decisions to be made, AT&T Business is with you every step of the way in uncovering the right technologies to keep you connected, and help your business thrive.



AT&T's overall wireless voice and data network now covers more than 99% of all Americans.



AT&T has the nation's best and fastest wireless network\*

# 24/7

Support across online, by phone, and in stores from experts who specialize in mobility, internet, security, voice & collaboration, and other business solutions.



Nearly 2.5 million small business customers turn to AT&T. We are here for you!



# #1

in customer satisfaction for Small/Medium Business Wireline Service  
*Ranked by J.D. Power,*  
rated by our customers\*\*

Simply put, AT&T is experienced and is constantly refining its processes to respond at a moment's notice.



# AT&T Business – Stand together, stay connected

We believe in small business. We want to make it as simple as possible for you to get the tools you need with purchasing options and support specifically designed for small businesses. With a team of specialists across virtually every facet of the technology landscape, we can help you choose the solutions and services that will set your business up for success.

For more resources, [click here](#).

To purchase AT&T Business solutions, [click here](#).





AT&T Business